

EPS is 100 % recyclable

EPS waste can be recycled both mechanically and chemically. EPS waste that has been contaminated is thermally recycled.

- Ground EPS is used as aggregate in lightweight concrete and insulating renders, and as a pore-forming material in the brick industry.



- During extrusion EPS waste is melted and granulated. The Upper Austrian company EREMA Engineering Recycling Maschinen und Anlagen Ges.m.b.H. supplies the extruders that are required for this process. The polystyrene granulate that is obtained is used to make new products such as park benches, fence posts, shoe soles and the like.



- During synthesis the polystyrene is broken down into its basic petrochemical components, which can then be used to make new plastics or for other purposes.
- With a calorific value of 40 MJ/kg EPS contains as much energy as heating fuel. In cement factories polystyrene is used as a substitute fuel and in waste incineration plants in the auxiliary firing system. In both cases, valuable heating oil is saved.

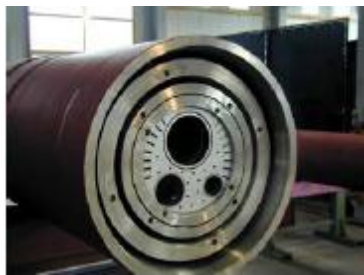


Photo: Burner in the Mannersdorf, NÖ cement works